

LINCOLN 1990-93 TOWN CAR

Sedan

TUNERS / CASSETTE / DISC PLAYERS						DISC EQ STACK
	MICRO	MINI	STAN	DIN 1	DIN 2	
CHASSIS H	1 ³ / ₄ -2	1 ³ / ₄ -2	2	2	2	4
CHASSIS W	6 ¹ / ₄	7 ¹ / ₈	7 ¹ / ₈	7 ¹ / ₈	7 ¹ / ₈	7 ¹ / ₈
CHASSIS D	5 ¹ / ₈	4 ³ / ₈ -5 ¹ / ₂	5 ¹ / ₈ -6 ¹¹ / ₁₆	4 ³ / ₈ -5 ¹ / ₂	5 ⁷ / ₈ -6 ¹¹ / ₁₆	5 ⁷ / ₈ -6 ¹¹ / ₁₆
NOSE H	1 ¹ / ₂ -1 ⁹ / ₁₆	1 ⁵ / ₈ -1 ³ / ₄	1 ⁵ / ₈ -1 ³ / ₄	2 ³ / ₈	2 ³ / ₈	
NOSE W	3 ⁷ / ₁₆ -3 ¹ / ₂	4 ¹ / ₈ -4 ³ / ₁₆	4 ¹ / ₈ -4 ³ / ₁₆	7 ¹ / ₂	7 ¹ / ₂	
SHAFTSP.	4 ⁷ / ₈ -5 ¹ / ₈	5 ¹ / ₈ -5 ³ / ₄	5 ¹ / ₈ -6			

IN DASH APPLICATION NOTES

	K ^S	K ^S	K ^S	P	P	N
--	----------------	----------------	----------------	---	---	---

IN-DASH INSTALLATION AREA DIMENSIONS

	DEPTH	WIDTH	HEIGHT	SHAFT CUP OFFSET
CAVITY	11 ^{**}	7 ³ / ₄ "	2 ⁵ / ₈ "	LEFT
DASH OPENING		†	†	RIGHT
DASH MAT: PLASTIC		THICKNESS: 3/32"		SHAFT SP.

AMPLIFIER LOCATIONS (WxHxD)

UNDER DASH	UNDER SEAT	REAR SIDE PANEL	TRUNK
	13x14 ¹ / ₂ x12 ^{**}		VARIOUS

EQUALIZER LOCATIONS

DASH	CONSOLE	GL. BOX
		14x3x5-10"



Dimensions shown are inches.
For inch/mm conversions refer to chart section.

REAR DECK

Factory Provisions: 6 x 9"††
Aftermarket: 5¹/₄"K, 6¹/₂"K, 6 x 9"

NOTE: The Ford/JBL system incorporates a mono subwoofer and enclosure which mounts/fits in the center of the rear deck.

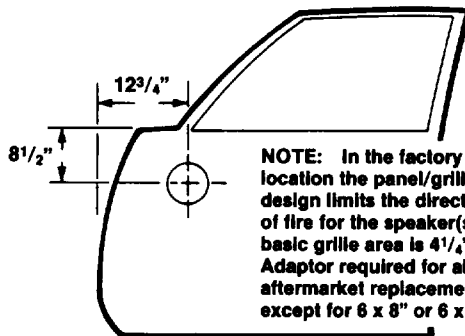


CAVITY W L D
10" x 7" x 12"

UPDATED THROUGH
'91
'92
'93
'94

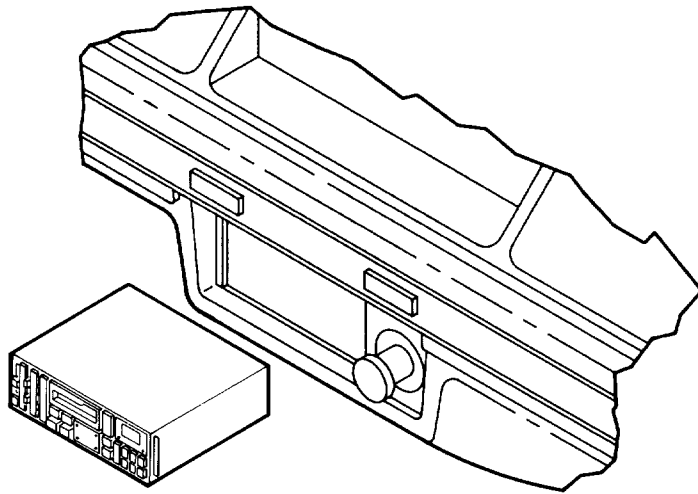
FRONT DOORS

Factory Provisions: Ford - style 6 x 8"††
Aftermarket: 5"K, 5¹/₄"K, 6¹/₂"K, 6 x 9"



NOTE: In the factory location the panel/grille design limits the direction of fire for the speaker(s), basic grille area is 4¹/₄" sq. Adaptor required for all aftermarket replacements except for 6 x 8" or 6 x 9".

CAVITY W H D
9" x 7¹/₂" x 2¹⁵/₁₆"

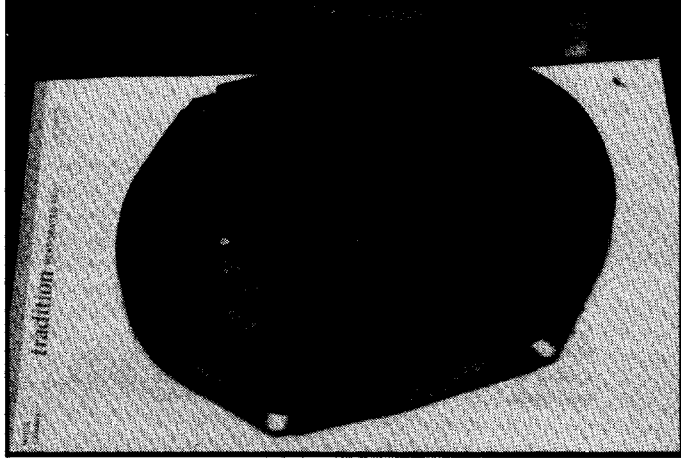


NOTE: THIS MANUAL IS BASED ON CAREFULLY DOCUMENTED RESEARCH. ABSOLUTE ACCURACY IS ATTEMPTED BUT NOT GUARANTEED. USE THIS MANUAL AS A REFERENCE GUIDE. SCOSCHE IND. CANNOT BE RESPONSIBLE FOR INCONSISTENCIES THAT MAY OCCUR.

- * = Passenger side only.
- ** = Note the small plastic obstruction at the bottom right corner of the cavity at 7¹/₂" depth.
- † = The actual dash opening is 7³/₃₂" x 2¹/₈", the trim area opening (or available area for nosepiece clearance) is 7⁹/₁₆" x 2⁹/₁₆".
- †† = Vehicles equipped with the Ford/JBL system use an enclosure (which houses a 4" mid and 1¹/₄" tweeter) designed to fit the 6 x 8" / 6 x 9" pattern.
- B = BACK UP PLATES REQUIRED.
- C¹ = CUT TRIM/PLASTIC (STRUCTURE).
- C² = CUT STEEL.
- D = BELOW DECK ONLY.
- D¹ = LIFT PORTION OF DECK. (MAY REQUIRE STRUCTURAL REINFORCEMENT).
- D² = CUT STEEL WHEN TOP MOUNTED. DO NOT IF BELOW DECK.
- D³ = NARROW SURFACE, BELOW DECK ONLY.
- F¹ = MINIMUM MODIFICATION FILE SHAFT HOLES OR DASH OPENING.
- F² = MODIFY DASH CAVITY AND/OR PANEL.
- K = INSTALLATION KIT, SPACER OR ADAPTOR REQUIRED.
- K¹ = KIT MODIFICATIONS REQUIRED.
- K² = EXTENSION KIT RECOMMENDED.
- K³ = WHEN EQUIPPED WITH FACTORY "ELECTRONIC" RADIO.
- K⁴ = FABRICATE PANEL/BRACKETS.

- K^S = WHEN EQUIPPED WITH STANDARD TWO SHAFT RADIO/TAPE PLAYER. FABRICATE KIT WHEN EQUIPPED WITH FLAT FACE ELECTRONIC RADIO/TAPE PLAYER.
- N^S = SCOSCHE KIT RECOMMENDED.
- N = NOT RECOMMENDED. EXTENSIVE MODIFICATION REQUIRED.
- P = PERFECT WITHOUT MODIFICATION.
- P¹ = MODIFY OR REMOVE POCKETS.
- P² = COIN POCKET LOCATION IN-DASH (MAY REQUIRE TRIM KIT).
- P³ = PERFECT WHEN EQUIPPED WITH STANDARD TWO SHAFT RADIO. K WITHOUT.
- U = UNDERDASH.
- W¹ = WITH POWER WINDOWS ONLY.
- W² = WITHOUT POWER WINDOWS ONLY.

1990-93 LINCOLN TOWN CAR SEDAN



JBL 2-WAY ENCLOSURE

PRELIMINARY: DISCONNECT THE NEGATIVE BATTERY CABLE.

ANTENNA: THE FACTORY POWER ANTENNA IS LOCATED ON THE LEFT REAR FENDER.

RADIO REMOVAL AND IN-DASH INSTALLATION:

NOTE: FOR SHAFT UNIT INSTALLATIONS WE RECOMMEND USING THE 1190 INSTALLATION KIT.

1. USE STANDARD DIN RADIO REMOVAL TOOLS TO RELEASE THE DIN-TYPE SIDE CHASSIS SPRING CLIPS (PHOTO 1).
2. PULL THE UNIT OUT OF THE CAVITY, DISCONNECT THE CONNECTORS AND REMOVE THE RADIO.

FRONT DOOR SPEAKER INSTALLATION:

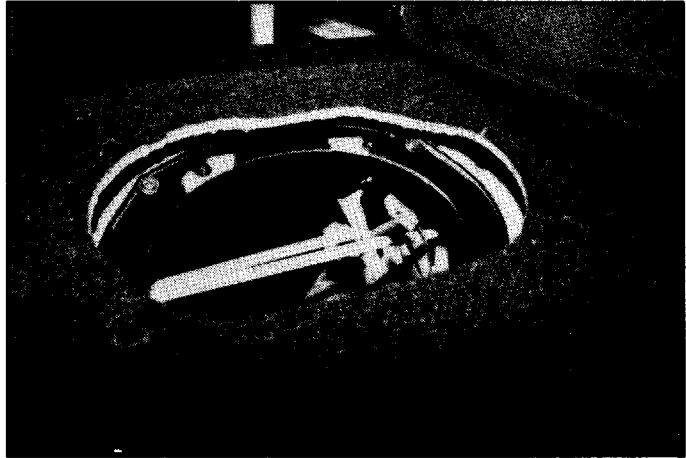
NOTE: STANDARD FACTORY PROVISIONS ARE FOR 6 x 8" FORD SPEAKERS - JBL SYSTEMS ADAPT TO THE 6 x 8" PATTERN AND HOUSE A 4" MID AND 1 1/4" TWEETER IN AN ENCLOSURE.

1. LIFT THE ASHTRAY COVER AND REMOVE THE SINGLE SCREW LOCATED THERE, LIFT AND SLIDE THE ELECTRONIC CONTROL PANEL OUT FROM THE DOOR PANEL, DISCONNECT THE ELECTRICAL HARNESSES TO ACCESS AND REMOVE THE (2) SCREWS LOCATED THERE.
2. REMOVE (1) SCREW FROM THE DOOR LATCH CUP TRIM PIECE AND FIRMLY SNAP IT OUT OF THE PANEL.
3. CAREFULLY SNAP OUT THE TRIM CAPS FROM EACH SIDE OF THE DOOR PULL HANDLE - EXTRACT THE (2) SCREWS FROM THIS LOCATION.
4. REMOVE (1) SCREW FROM THE TOP, OUTSIDE EDGE OF THE DOOR PANEL AND (1) FROM THE TOP INSIDE.
5. CAREFULLY RELEASE THE PUSH-IN TYPE DOOR PANEL FASTENERS (USE THE PROPER TOOL FOR PRYING TO AVOID DAMAGING THE PANEL).

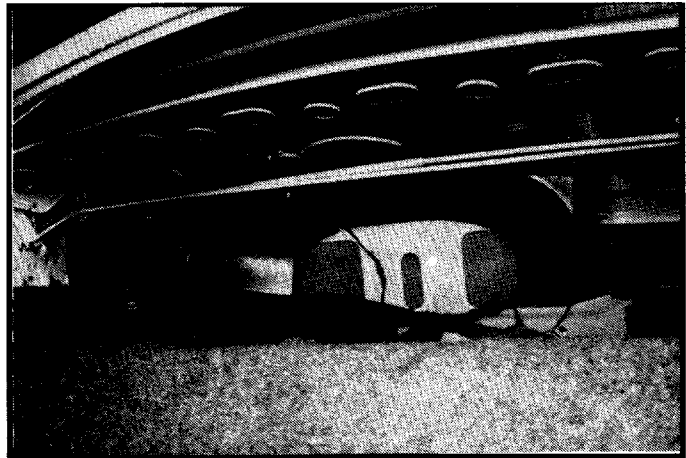
REAR DECK SPEAKER INSTALLATION:

NOTE: STANDARD FACTORY PROVISIONS ARE FOR 6 x 9" FORD SPEAKERS - JBL SYSTEMS ARE THE SAME AS THE FRONT SPEAKERS, HOWEVER THEY USE AN ADAPTOR TO CONVERT TO 6 x 8'S.

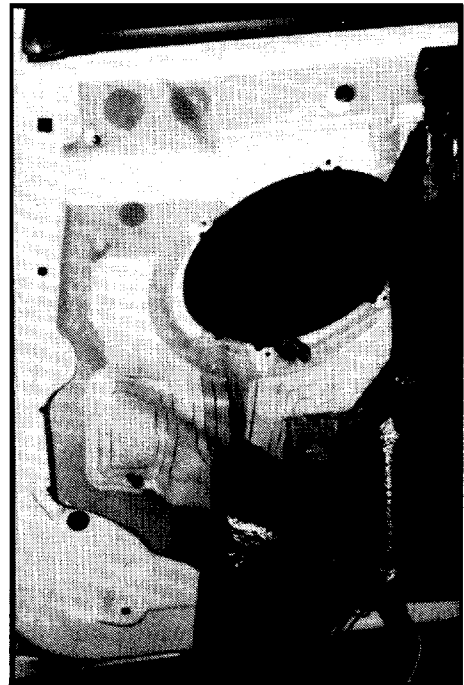
1. CAREFULLY LIFT OUT THE SPEAKER GRILLE.
2. EXTRACT (4) SCREWS SECURING THE SPEAKER. AN ADDITIONAL (4) SCREWS SECURE THE ADAPTOR TO THE DECK.



SIMPLY POP OFF THE FACTORY GRILLS FOR REAR SPEAKER ACCESS.



UNDER DECK VIEW OF THE JBL EQUIPPED VEHICLE - NOTE ENCLOSURE AND ADDITIONAL AMPLIFICATION.



FRONT DOOR PROVISION - ADAPTOR REQUIRED FOR ALL BUT 6 x 8" OR 6 x 9" REPLACEMENTS.